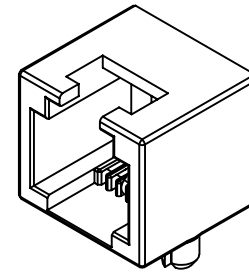


RoHS 2.0

REV.	ECN	NO.	DESCRIPTION	DATE	DESIGN
A1.	/.		重新核对图面	21.01.05	LiHui
A2.	/.		HD	22.08.15	LZR

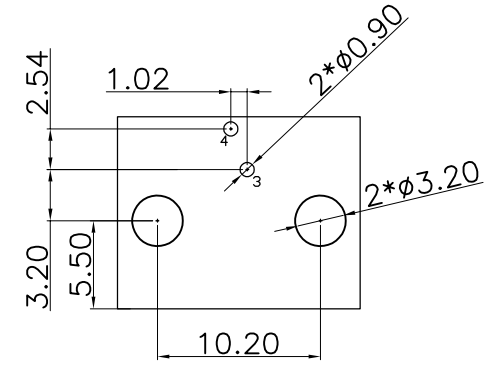
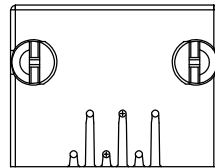
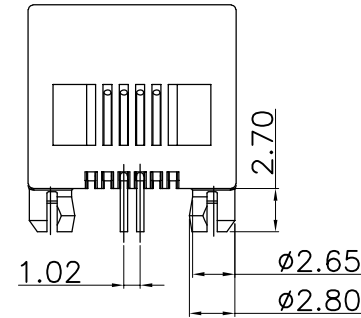
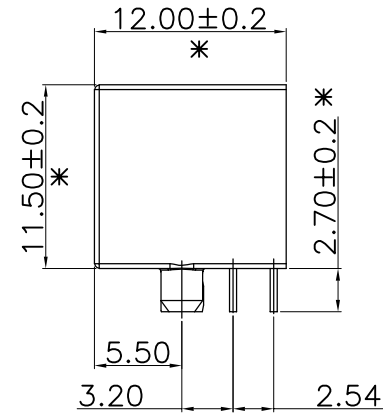
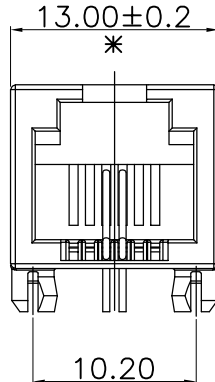
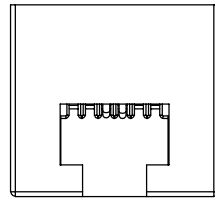


3D VIEW

NOTES:

- MATERIAL:
 - HOUSING: PBT ,COLOR IS GRAY 537c UL94-V0;
 - CONTACT: PHOSPHOR BRONZE, $\phi 0.46 \pm 0.02$ mm;
- FINISH: PLATED GOLD OVER NI;
- RECINNEDDED PCB THICKNESS: 1.60mm;
- ELECTRICAL:
 - VOLTAGE RATING: 125 VAC RMS;
 - CURRENT RATING: 1.5 AMP;
 - CONTACT RESISTANCE: 35MILLIOHMS MAX.;
 - WITHSTAND VOLTAGE: 1000 VAC RMS 50(60)Hz,1MIN.;
 - INSULATION RESISTANCE: 1000MEGOHMS MIN @500V DC;
- MECHANICAL:
 - MATING/UNMATING FORCE: 22N MAX.;
 - RETENTIION STRENGTH: 50N MIN.;
 - OPERATING LIFE: 750 CYCLES MIN.;
- SALT SPRAY TEST: 12H;
- SOLDERABILITY: $245 \pm 5^{\circ}\text{C}, 5 \pm 0.5\text{S}$;
- RESISTANCE TO SOLDER: $260 \pm 5^{\circ}\text{C}, 10 \pm 1\text{S}$;
- ENVIRONMENTAL:
 - STORAGE TEMPERATURE RANGE: $-40^{\circ}\text{C} \sim +85^{\circ}\text{C}$;
 - OPERATION TEMPERATURE RANGE: $-25^{\circ}\text{C} \sim +70^{\circ}\text{C}$;
- MATES WITH: MODULAR PLUGS THAT CONFORM TO FCC REGULATION PART 68.500;
- THE MARK WITH "*" IS THE KEY INSPECTION DIMENSION FOR QC.
- PART NO: 09.01.03.XXX

- 001: 6P2C GRAY 537C
- 002: 6P4C GRAY 537C
- 003: 6P6C GRAY 537C



RECOMMENDED PCB LAYOUT
TOP VIEW (TOL: ± 0.05)

B	端子	磷铜	镀镍 镀金(G/F)	
A	底座	PBT	灰色	
	序号	品名	材质	电镀/颜色
				备注

深圳市虹成电子有限公司

UNLESS OTHERWISE, GENERAL TOLERANCE: X.xxx ± 0.10 X.xx ± 0.20 X.x ± 0.30	NAME: 小RJ11 6P2C		P/N: HC-WK62-MIH12-G	
	THIRD ANGLE PROJECTION 		UNIT: mm	SCALE: 1:1
ANGULAR: X.xx' $\pm 1'$ X.x' $\pm 3'$ X.' $\pm 5'$	DRAWN:		CHECKED:	APPROVED
		SIZE: A4	SHEET: 1/1	REV.: A1