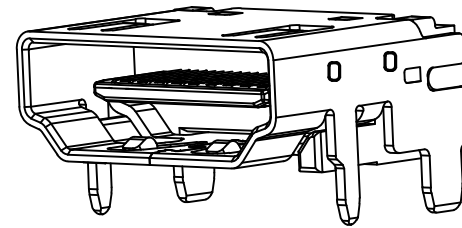
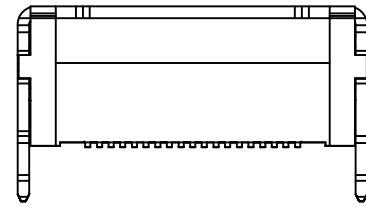
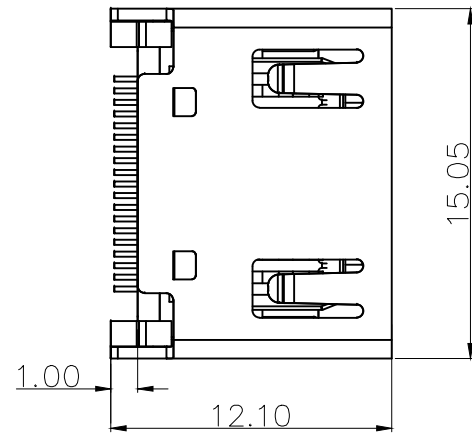


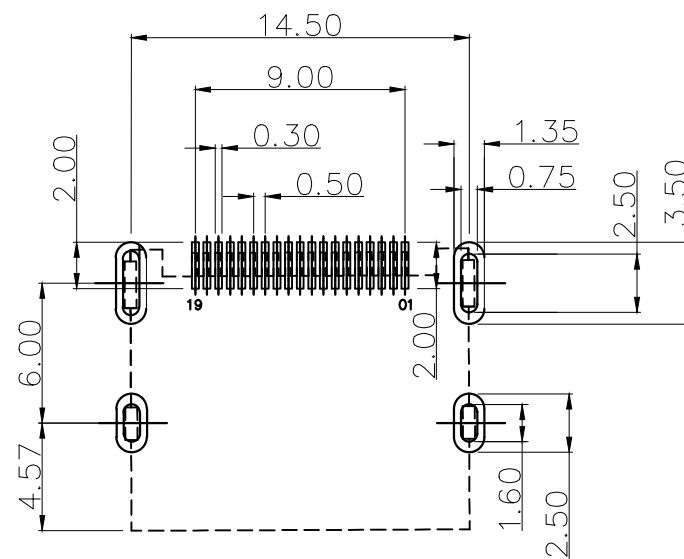
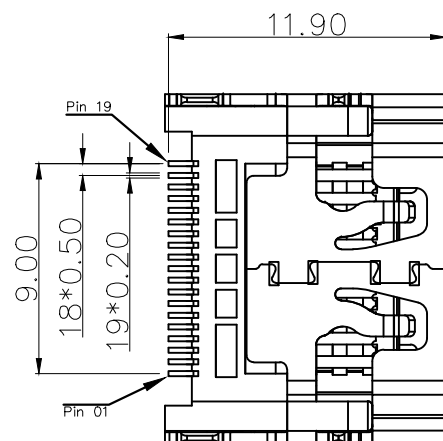
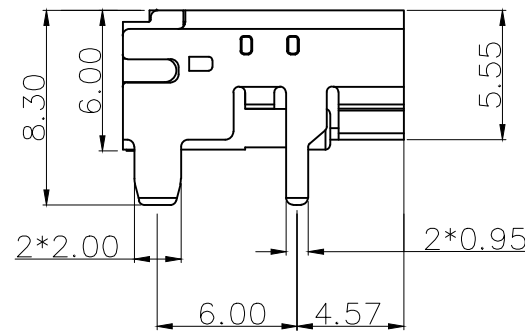
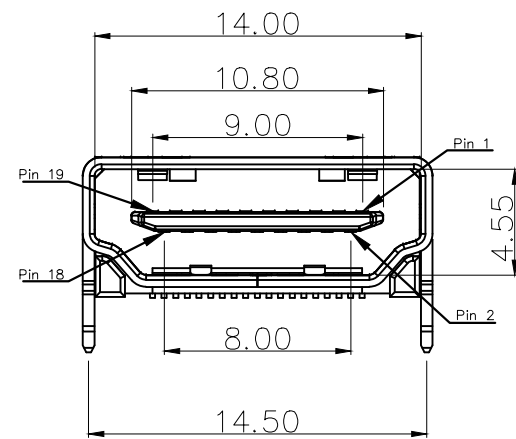
标记 MARK	ECN编号/变更内容 ECN NO/DEFINITION	修改 REVISE	日期 DATE	核准 APPROVE



3D VIEW

NOTES

- MATERIAL:
 - HOUSING: LCP,COLOR IS GRAY,HIGH TEMPERATURE PLASTIC;
 - CONTACT: BRASS(H65 T=0.20mm);
 - SHELL: BRASS(H65,T=0.50mm);
- FINISH:
 - TERMINAL:
 - CONTACT AREA: GOLD PLATED G/Fu";
 - SOLDER AREA: PLATED OVER TIN;
 - SHELL: NI PLATED OVER ALL ;
- ELECTRICAL:
 - VOLTAGE RATING: 40 VAC RMS;
 - CURRENT RATING: 0.5 AMP;
 - CONTACT RESISTANCE: 30mΩ MAX.;
 - WITHSTAND VOLTAGE: 500 VAC RMS
50(60)Hz,1MIN.;
 - INSULATION RESISTANCE: 100MEGOHMS MIN
@500V DC;
- MECHANICAL:
 - MATING FORCE: 44.1N MAX.;
 - UNMATING FORCE: 9.8N MIN.;
 - OPERATING LIFE: 10000 CYCLES MIN.;
- ENVIRONMENTAL:
 - STORAGE TEMPERATURE RANGE: -40°C~+85°C
 - OPERATION TEMPERATURE RANGE: -25°C~+70°C;
- SALT SPRAY TEST:24H(Salt spray test 24hours for gold plated area and 8 hours for tin plated area)



RECOMMEND PCB LAYOUT(±0.05)

3	外壳	铜	镀镍	
2	接触	铜	镀金	
1	基座	LCP	灰色	
序号	品名	材质	电镀/颜色	备注

	深圳市虹成电子有限公司		品名 TITLE	HDMI座	
			料号 PART NO	HC-HDMI0019T-2	
UNLESS OTHERWISE, GENERAL TOLERANCE:		比列 SCALE	1:1		
X.xxx ±0.10 X.xx ±0.20 X.x ±0.30 X. ±0.35		单位 UNIT	MM	制图 DRAW	AhYe
ANGULAR: X.xx' ±1" X.x' ±3" X.' ±5"		张数 PART NO	1 OF 1	审核 CHECKED	夏操云
		版本 REV	A	批准 APPROVE	赵亮亮

