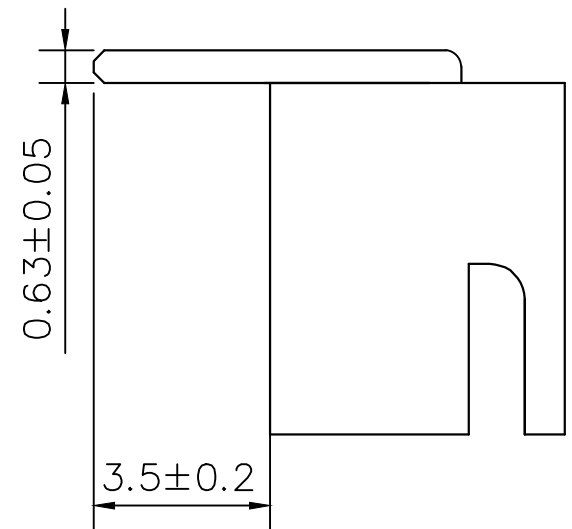
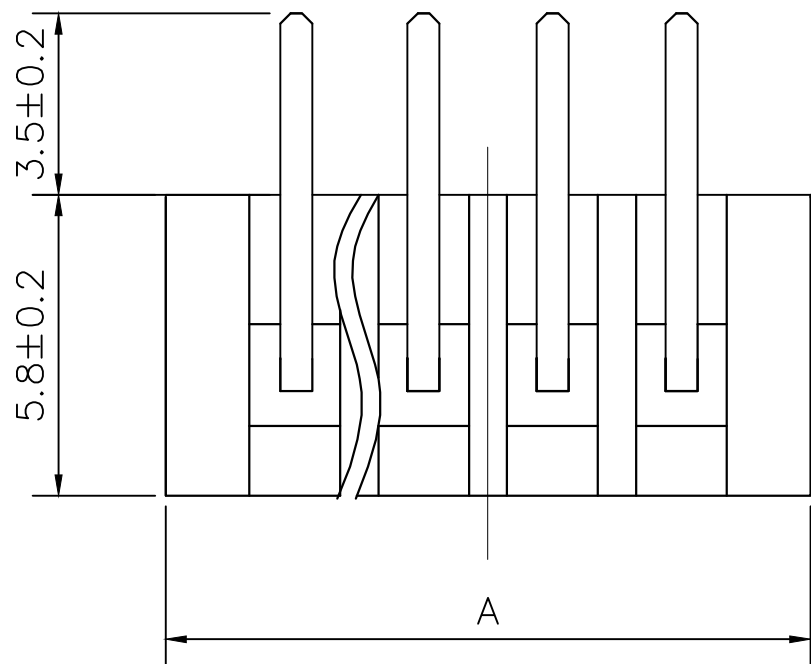
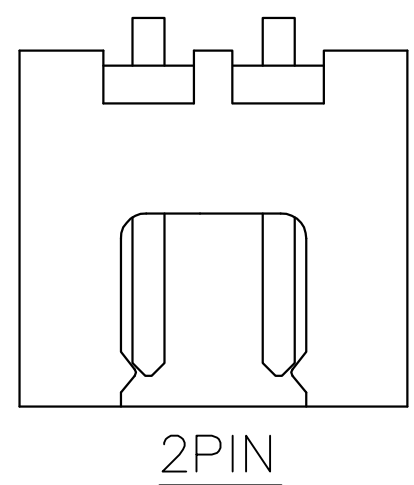
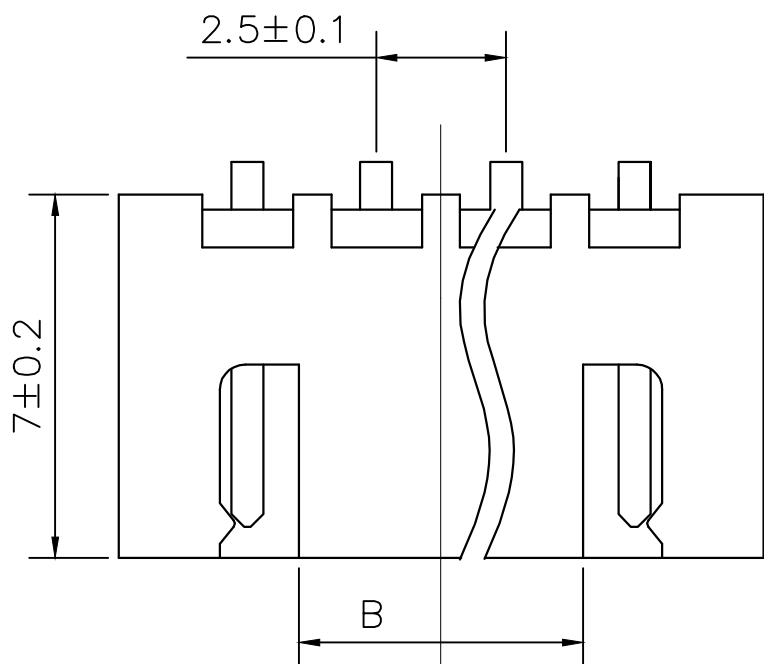


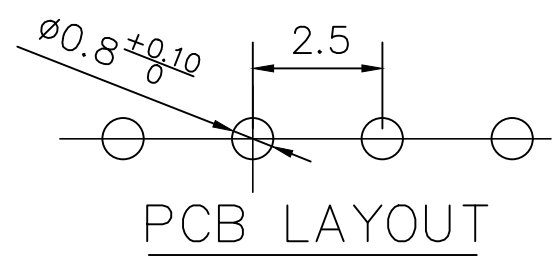
标记 MARK	ECN编号/变更内容 ECN NO/DEFINITION	修改 REVISE	日期 DATE	核准 APPROVE

Pin	DIM A	DIM B
2	7.50	0.00
3	10.00	2.50
4	12.50	5.00
5	15.00	7.50
6	17.50	10.00
7	20.00	12.50
8	22.50	15.00
9	25.00	17.50
10	27.50	20.00
11	30.00	22.50
12	32.50	25.00
13	35.00	27.50
14	37.50	30.00
15	40.00	32.50
16	42.50	35.00


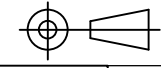


技术要求:

- 适应基板厚度: 1.2mm~1.6mm
- 温度范围: -25°C~85°C
- 额定电压: 250V AC/DC
- 额定电流: 3A
- 接触电阻: ≤0.01Ω
- 绝缘电阻: ≥1000MΩ
- 耐 压: 1000V AC/minute



序号	品名	材质	电镀/颜色	备注
2	插针	铜	镀锡	
1	基座	PA66	米色	

 深圳市虹成电子有限公司 GENERAL TOLERANCES (UNLESS SPECIFIED)	品名 TITLE	针座		
	料号 PART NO	HCZZ0139-4		
比列 SCALE	1:1			
单位 UNIT	MM	制图 DRAW	AhYe	
张数 PART NO	1 OF 1	审核 CHECKED	夏操云	
版本 REV	A	批准 APPROVE	赵亮亮	

