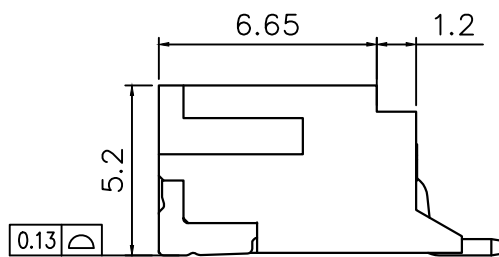
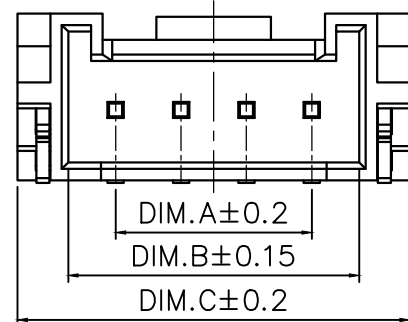
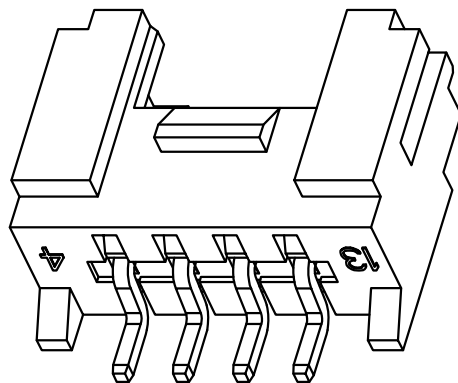
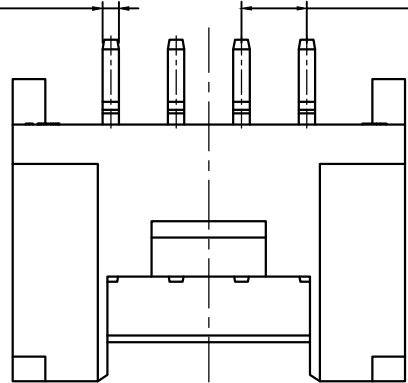


| 标记 MARK | ECN编号/变更内容 ECN NO/DEFINITION | 修改 REVISE | 日期 DATE | 核准 APPROVE |
|------------|---------------------------------|--------------|------------|---------------|
| | | | | |
| | | | | |

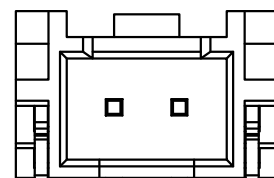
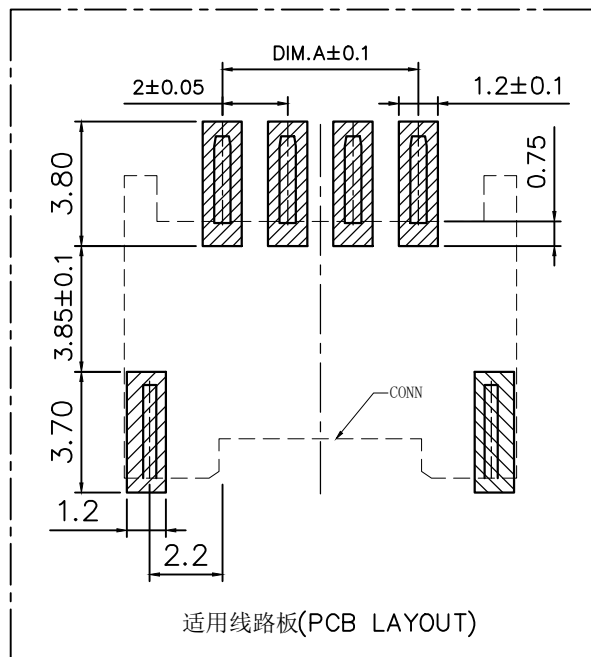
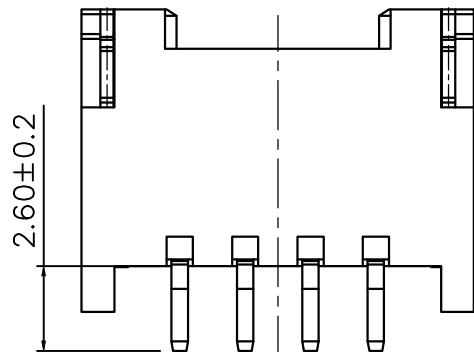
| CKI | DIM A | DIM B | DIM C |
|-----|-------|-------|-------|
| 2 | 2.00 | 4.90 | 8.00 |
| 3 | 4.00 | 6.90 | 10.00 |
| 4 | 6.00 | 8.90 | 12.00 |
| 5 | 8.00 | 10.90 | 14.00 |
| 6 | 10.00 | 12.90 | 16.00 |
| 7 | 12.00 | 14.90 | 18.00 |
| 8 | 14.00 | 16.90 | 20.00 |
| 9 | 16.00 | 18.90 | 22.00 |
| 10 | 18.00 | 20.90 | 24.00 |
| 11 | 20.00 | 22.90 | 26.00 |
| 12 | 22.00 | 24.90 | 28.00 |
| 13 | 24.00 | 26.90 | 30.00 |
| 14 | 26.00 | 28.90 | 32.00 |
| 15 | 28.00 | 30.90 | 34.00 |
| 16 | 30.00 | 32.90 | 36.00 |

$N-0.5 \pm 0.03(SQ)$ $2.0 \pm 0.15(PITCH)$

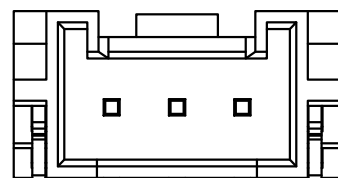


技术指标:

1. 温度范围: $-40^{\circ}C \sim 85^{\circ}C$
2. 额定电压: 200V, AC
3. 接触电阻: $\leq 55m\Omega$ (Initial) per contact
 $\leq 25m\Omega$ Change allowed
4. 绝缘电阻: $\geq 1000M\Omega$



2P结构样式



3P结构样式

| 序号 | 品名 | 材质 | 电镀/颜色 | 备注 |
|----|----|-----|-------|----|
| 2 | 插针 | 铜 | 镀锡 | |
| 1 | 基座 | LCP | 本色 | |

| | | | |
|--|--|---|--|
| | 深圳市虹成电子有限公司 品名 TITLE: 针座 料号 PART NO: HCZZ0383-7 | | |
| | GENERAL TOLERANCES (UNLESS SPECIFIED) X. ±0.50 .XX ±0.10 .X ±0.20 .XXX ±0.05 ANGLES ±1° | 比列 SCALE: 1:1 单位 UNIT: MM 张数 PART NO: 1 OF 1 版本 REV: A | |

